

Android PCAP Touch Screen Kiosks

43" | 50" | 55"



Fully integrated kiosk solution featuring rear ports and connections for use with built-in or third party PC

All in One Touch Kiosk

Combining edge-to-edge glass PCAP technology with a stylish and secure kiosk. The ergonomic design, along with the built in Android OS and facility to seamlessly use a third party PC, sets this solution apart from other touch screen kiosks.



Integrated Android Solution

This kiosk comes with an integrated Android media player as standard. For a more budget friendly solution there are touch screen monitor and integrated Windows OS versions available on request.



10 Point PCAP Touch

Having up to 10 touch points allows you to manipulate images, zoom in an out as well as perform many other touch gestures; much like you would with a domestic tablet. It also allows for multiple users interacting with the screen at one time.



10
Touch Points

Surface Plasma Treatment

The oleophobic coating makes the glass front more resistance to oil and water residue left by fingerprint marks and makes touch gestures smoother. Unlike other touch screens the glass is not etched, vastly improving the optical clarity.



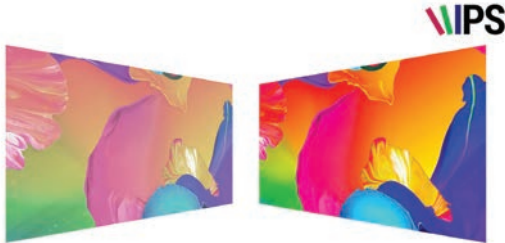
None Treated Touch Screen

PCAP Surface Plasma Treated Touch Screen

Other Features

450cd/m² IPS Panel

Commercial grade IPS technology accurately displays image quality and colour depth with no fall-off in colour accuracy. These panels are designed to achieve ultimate lifelike colour temperature when used in either landscape or portrait.



Conventional Signage Display

Android PCAP Touch Screen Kiosks

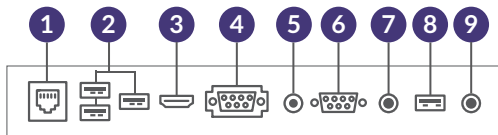
24/7 Commercial Use

These displays use a commercial grade LCD panel and LED backlight. They have the ability to be in constant use 24/7 for over 70,000 hours and have no external buttons or controls to avoid tampering.



Internal Locker

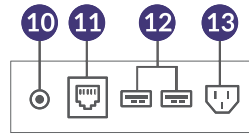
Should you need to connect the screen to an external source, like a PC or media player, you can use the USB and HDMI or VGA inputs and hide the player inside the internal locker.



- 1 LAN
- 2 USB x 3
- 3 HDMI
- 4 VGA
- 5 AUDIO IN
- 6 RS-232
- 7 MIC/AUDIO
- 8 TOUCH USB
- 9 AUDIO OUT

Rear Connections

Whether you are using the integrated PC or a third party device inside the internal locker you can use the connections on the rear to conveniently connect your USB, Ethernet cable, power cable and Wi-Fi aerial directly to the touch screen.

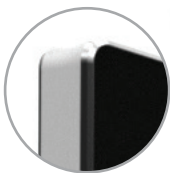


- 10 Wi-Fi
- 11 LAN
- 12 USB x 2
- 13 Power Socket



Giant Tablet Styling

Their tempered edge-to-edge glass face, rounded corners, super slim profile and unique concave indent aluminium surround all add to the stunning tablet-like aesthetics as well as protecting the internal components from potential damage.



Concave Indent Profile



Touch Monitor and Windows OS Versions

If your project does not require an integrated Android media player we can offer a budget-friendly monitor version or a model with integrated Windows OS.



Integrated Speakers

The displays feature two integrated slimline speakers for applications that require an audio element.



Touch CMS

For a small charge you can take advantage of our user-friendly CMS, allowing you to conveniently create your own interactive content.



Key Features



INTEGRATED ANDROID



10 TOUCH POINTS

IPS

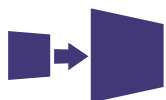
IPS PANEL



24/7 COMMERCIAL USE



TOUCH MONITOR / WINDOWS
VERSIONS AVAILABLE



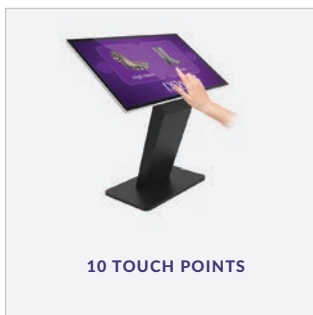
WI-FI AND LAN



ATTACH DEVICES



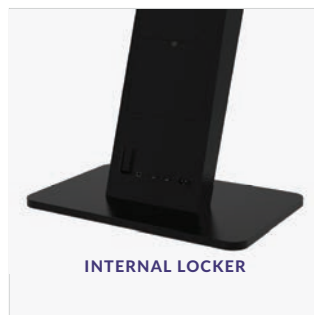
INTEGRATED SPEAKERS



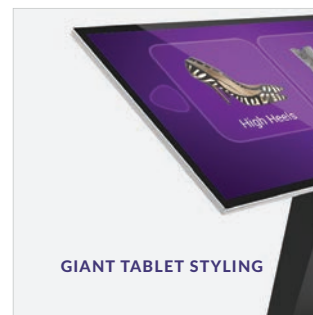
10 TOUCH POINTS



SURFACE PLASMA
TREATMENT



INTERNAL LOCKER

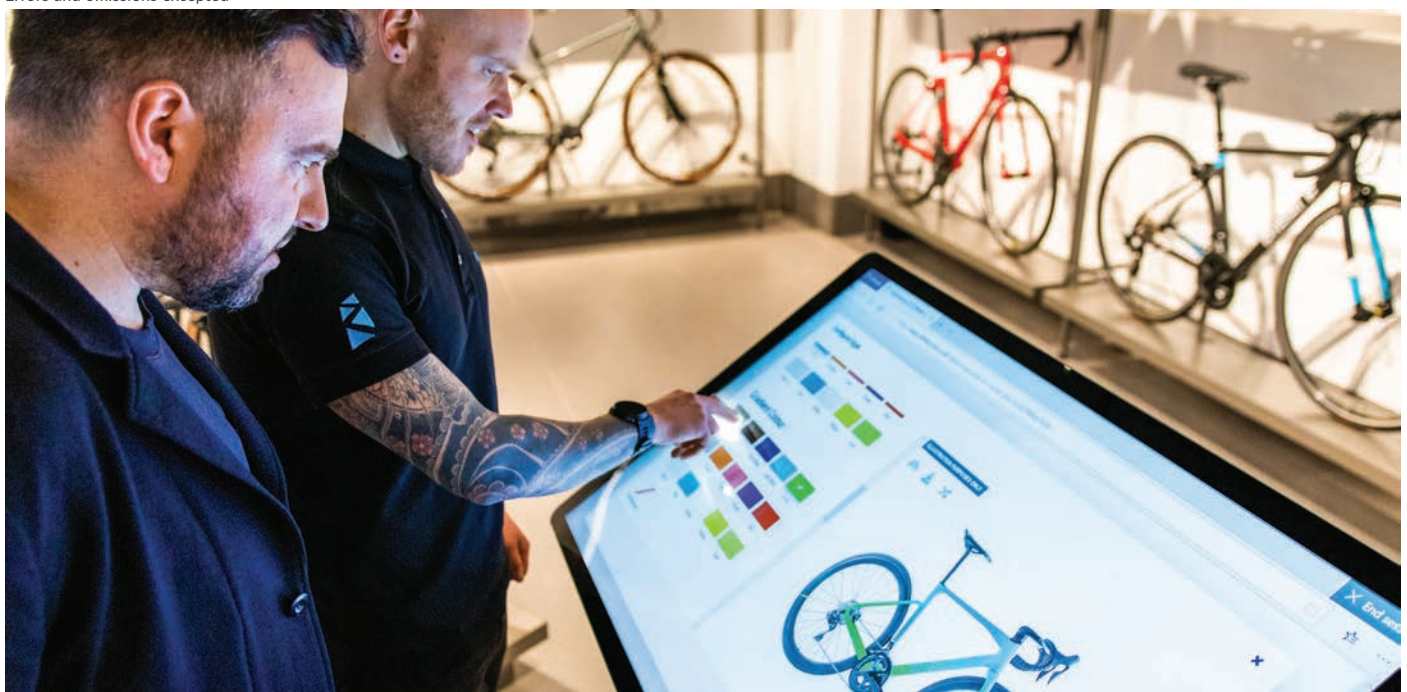


GIANT TABLET STYLING

Specification Table

		43 Inch	50 Inch	55 Inch
Panel	Resolution	1920x1080		
	Display Area (mm)	941.2x529.4	1072.8x603	1209.6x680.4
	Aspect Ratio	16:9		
	Brightness (cd/m ²)	450		
	Colour	16.7M		
	Viewing Angle	178°		
	Contrast Ratio	5000:1		
Touch	Touch Technology	Projected Capacitive		
	Touch Points	10		
	Glass Hardness	7H minimum		
Audio	Speaker Type	2W, 4Ω (x2)		
	Inputs (when used as monitor)	HDMI, VGA		
	Audio Input (when used as monitor)	Audio Socket (3.5mm)		
AV Inputs/Outputs	Audio Output (Internal PC)	Audio Socket (3.5mm)		
	Power Consumption (W)	65	75	85
	Input Voltage	AC110~240V (50Hz~60Hz)		
Mechanical	Unit Size (WxHxD mm) (Landscape)	TBC	TBC	TBC
	Package Size (WxHxD mm)	TBC	TBC	TBC
	Footprint (WxD)	800x500		
	Net Weight (kg)	TBC	TBC	TBC
	Gross Weight (kg)	TBC	TBC	TBC
Environmental	Operating Temperature	0 °C to 50 °C		
	Storage Temperature	-30°C to 60°C		
	Operating Humidity	10% to 80%		
	Storage Humidity	5% to 95%		
Computer	CPU	Quad-Core ARM Cortex A17, 1.6GHz		
	GPU	Quad-Core ARM Mali-T764		
	RAM	DDR3 2GB		
	Internal Storage	8GB eMMC		
	USB	1 x USB (OTG/HOST), 1 x USB (HOST)		
	LAN	100M/1000M Ethernet		
	Wi-Fi	802.11b/g/n/ac		
	OS	Android 7.1		
	Graphic Engine	OpenGL ES 1.1/2.0/3.0/3.1, OpenCL 1.1, Renderscript, Direct3D 11.1		
	Other	No accessible buttons or controls		
Accessories	Included	Remote Control, User Manual, Power Cable, USB to USB Cable, Wi-Fi Aerial		
Warranty	Warranty Period	3 Year Warranty		
	Technical Support	Lifetime		

Errors and omissions excepted

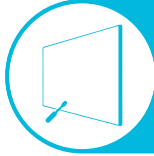


Why Choose Our Commercial Display Solutions?



Lifetime Technical Support

From the moment you receive your product, throughout the duration of your warranty and even after your warranty has expired we are here to support you. If you require any assistance setting up or using your product, or have any problems at all, we can provide free technical support via telephone and email.



On-site Support and Maintenance*

If needed, we can provide an installation service for any of our products. We can also set up service-level agreements for larger projects that require maintenance contracts.



Extended Warranty*

All of our commercial display products come with a 3 year commercial warranty as standard but if you want to extend this you can upgrade this to cover a 5 year period at point of purchase.



Training

As well as providing free remote CMS training sessions and webinars we can also visit you to deliver bespoke training for our software and hardware*.



Advanced Replacements†

Should your display suffer from any kind of hardware failure during the warranty period we will send you an advanced replacement and arrange for your old display to be collected, free of charge. This ensures no downtime where you are without a screen.



Custom Product Testing & Configuration

If you need us to test third party software or a website, or configure your screen in a particular way before it is dispatched (e.g. in a particular orientation or network mode), we can do so to make your life easier.



3D Rendering

Want to know how a particular screen will look once installed? Send us a photo of the location and we will create a 3D rendering of any screen in situ to help you to visualise how amazing it will look.



Logistics Support

We hold more stock in our UK warehouse than any other manufacturer so we can help you meet tight deadlines. For last minute orders we can also offer special express or morning delivery options*. We also carry out UK based quality control checks on every display before it leaves our warehouse.



Project Support

If you need to loan a sample unit to test we'd be more than happy to arrange this. We can also provide a rental service for temporary projects*.



Customisation*

Your display can be customised to suit your requirements by adding your logo or printed graphics or even tailoring the colour of a display. We can also carry out hardware modifications to existing products or manufacture bespoke solutions for special projects.



Extras*

As well as being able to provide accessories and add-ons, such as extra remote controls, NUC PCs and video wall controllers, we can also supply custom made flight cases which are great if a display needs to be moved safely from place to place.

†UK mainland only

*These particular services may incur additional charges