

# 19" Android Advertising Displays



Stunning displays that combine tablet-like aesthetics with a robust mild steel enclosure and tempered glass face

## Plug and Play

Plug and Play is the most straightforward way to upload content to the screen. Simply load images and videos onto a USB stick, insert into the display, wait for your content to copy over and then remove. Your images and videos will now play in a continuous loop.



## Free Scheduling Software

These displays come with free scheduling software for displaying different content at different times of the day. If you prefer to keep it simple you can update the screen directly without using the software.



## 450cd/m<sup>2</sup> IPS Panel

Commercial grade IPS technology accurately displays image quality and colour depth with no fall-off in colour accuracy. These panels are designed to achieve ultimate lifelike colour temperature when used in either landscape or portrait.



## 24/7 Commercial Use

These displays use a commercial grade LCD panel and LED backlight. They have the ability to be in constant use 24/7 for over 70,000 hours and have no external buttons or controls to avoid tampering.



## Other Features

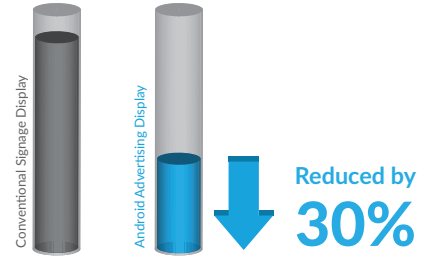
### Power Timer

The eco-friendly power timer allows you to assign daily or weekly on and off times for your screen meaning that it is only in use when it needs to be; improving your environmental efficiency.



### Low Power Consumption

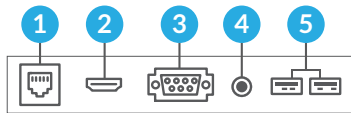
The LED backlight technology provides improved brightness and contrast. Their lifespan is drastically improved to over 70,000 hours and the power consumption is reduced by around 30%.



### Multiple Inputs

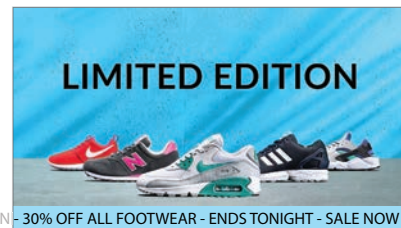
Should you need to use the screen as a monitor you can connect it to an external source, like a PC or media player, using the HDMI input or the VGA and 3.5mm audio jack inputs.

- 1 LAN
- 2 HDMI
- 3 VGA
- 4 Audio in
- 5 2 x USB



### Scrolling Text

You can display a "ticker tape" style scrolling text message along the bottom of the screen, to help you get your message across or help highlight any specific promotions or offers.



### Giant Tablet Styling

Their tempered glass face, rounded corners, super slim profile and aluminium surround all add to the captivating tablet-like aesthetics as well as protecting the internal components from potential damage.



### Wide Viewing Angle

Thanks to the IPS technology these displays provide fantastic image quality with a remarkable viewing angle of 178° in both landscape and portrait.



### Free Wall Mount

A super slim wall mount is included at no extra cost, allowing you to mount your screen in either landscape or portrait orientation; ensuring that you have a complete turnkey solution.



### Optional Network Upgrade

For a small charge you can upgrade your screen to be networked, allowing you to connect your screen via Wi-Fi, LAN or 4G, then remotely update it over the internet.



# Key Features



PLUG AND PLAY



INTEGRATED ANDROID  
MEDIA PLAYER

# VIPS

IPS PANEL



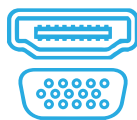
24/7 COMMERCIAL GRADE



LANDSCAPE OR PORTRAIT  
ORIENTATION



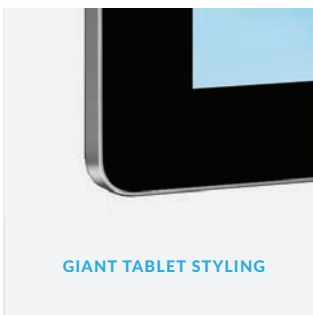
CONNECT DEVICES



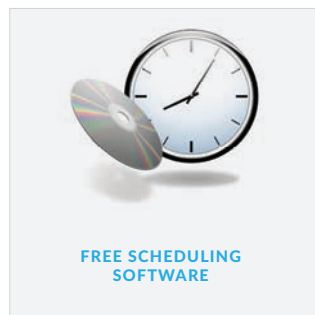
LED BACKLIGHT



OPTIONAL NETWORK UPGRADE



GIANT TABLET STYLING



FREE SCHEDULING  
SOFTWARE



FREE WALL MOUNT



LOCKABLE DOOR

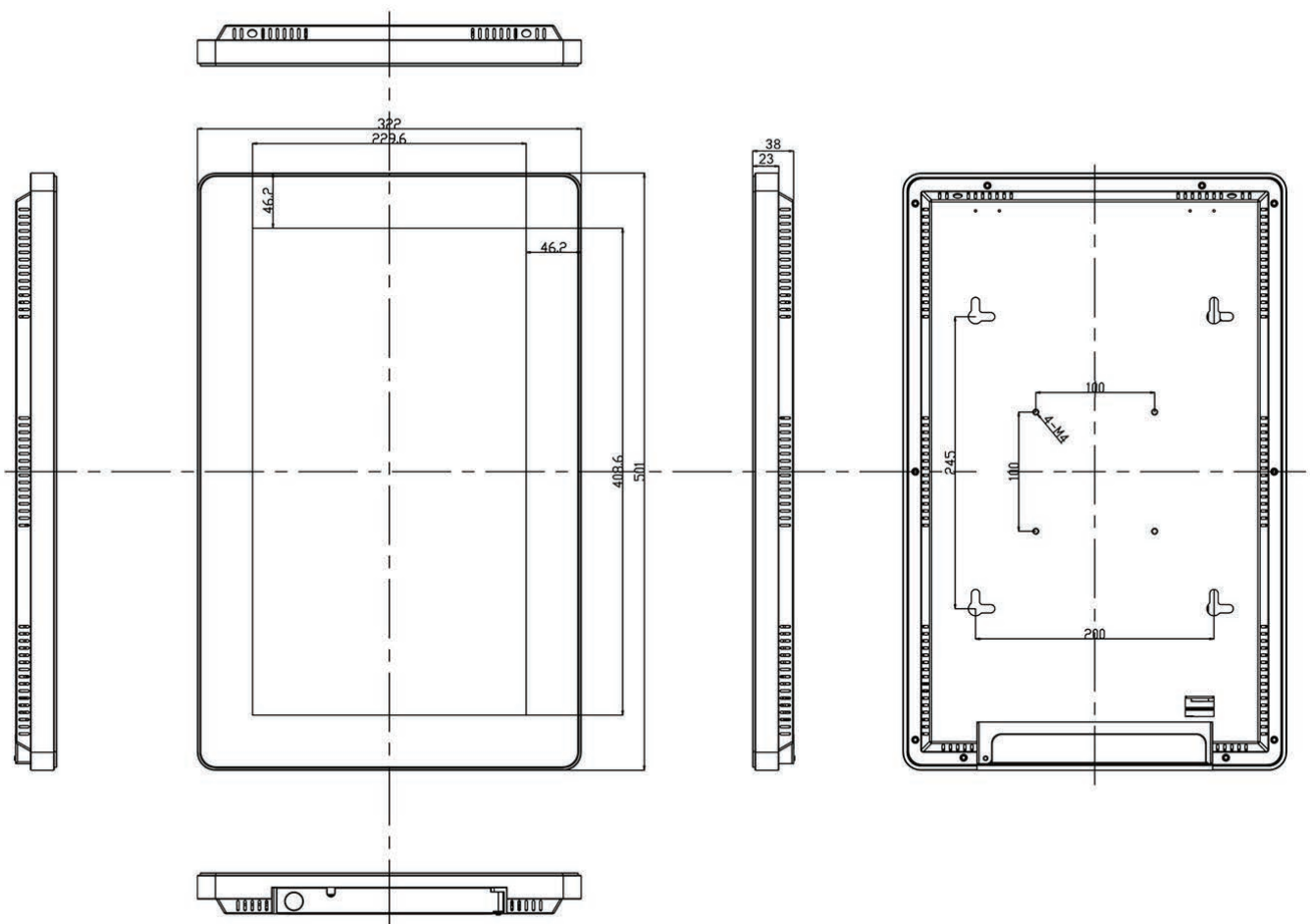


## Specification Table

|                  |   | 19 Inch  |  |  |
|------------------|---|--|--|--|
| Panel            | Resolution  | 1920x1080  |  |  |
|                  | Display Area (mm)   | 408.6x229.6  |  |  |
|                  | Aspect Ratio  | 16:9   |  |  |
|                  | Brightness (cd/m <sup>2</sup> )   | 450  |  |  |
|                  | Colour  | 16.7M  |  |  |
|                  | Viewing Angle   | 178°   |  |  |
|                  | Contrast Ratio  | 5000:1   |  |  |
| Audio            | Speaker Type  | 5W, 8Ω (x2)  |  |  |
| AV Inputs        | Video   | HDMI, VGA  |  |  |
|                  | Audio   | Audio Socket (3.5mm)   |  |  |
| Power            | Power Consumption (W)   | 16   |  |  |
|                  | Input Voltage   | AC110~240V (50Hz~60Hz)   |  |  |
| Mechanical       | Unit Size (WxHxD mm)  | 501x322x35.2   |  |  |
|                  | Package Size (WxHxD mm)   | 578x418x118  |  |  |
|                  | VESA Holes (mm)   | 100x100  |  |  |
|                  | Net Weight (kg)   | 6.3  |  |  |
|                  | Gross Weight (kg)   | 7.35   |  |  |
| Environmental    | Operating Temperature   | 0 °C to 50 °C  |  |  |
|                  | Storage Temperature   | -30°C to 60°C  |  |  |
|                  | Operating Humidity  | 10% to 80%   |  |  |
|                  | Storage Humidity  | 5% to 95%  |  |  |
| Media Formats    | Video (MPG, AVI, MP4, RM, RMVB, TS), Audio (MP3, WMA), Image (JPG, GIF, BMP, PNG) |  |  |  |
| Media Resolution | 1920x1080/1080x1920   |  |  |  |
| CPU              | Quad-Core ARM Cortex A17, 1.6GHz  |  |  |  |
| GPU              | Quad-Core ARM Mali-T764   |  |  |  |
| Computer         | RAM   | DDR3 2GB   |  |  |
|                  | ROM   | 8GB eMMC   |  |  |
|                  | USB   | 1 x USB (OTG/HOST), 4 x USB (HOST)                                 |  |  |
|                  | LAN   | 100M/1000M Ethernet (Network Version Only)                         |  |  |
|                  | Wi-Fi   | 802.11b/g/n/ac (Network Version Only)                              |  |  |
|                  | Bluetooth   | Bluetooth 4.0  |  |  |
|                  | OS  | Android 7.1  |  |  |
|                  | Graphic Engine  | OpenGL ES 1.1/2.0/3.0/3.1, OpenCL 1.1, Renderscript, Direct3D 11.1 |  |  |
|                  | Accessories   | Included   | Special Wall Mount, Scheduling Software, Remote Control, Key, User Manual                          |  |
|                  |   | Optional   | Network Upgrade, Touch Screen Version, Wall Mount, Floor Stand/Trolley, Ceiling Mount, Table Stand |  |
| Warranty         | Warranty Period   | 3 Year Warranty  |  |  |
|                  | Technical Support   | Lifetime   |  |  |

Errors and omissions excepted





# Why Choose Our Commercial Display Solutions?



## Lifetime Technical Support

From the moment you receive your product, throughout the duration of your warranty and even after your warranty has expired we are here to support you. If you require any assistance setting up or using your product, or have any problems at all, we can provide free technical support via telephone and email.



## On-site Support and Maintenance\*

If needed, we can provide an installation service for any of our products. We can also set up service-level agreements for larger projects that require maintenance contracts.



## Extended Warranty\*

All of our commercial display products come with a 3 year commercial warranty as standard but if you want to extend this you can upgrade this to cover a 5 year period at point of purchase.



## Training

As well as providing free remote CMS training sessions and webinars we can also visit you to deliver bespoke training for our software and hardware\*.



## Advanced Replacements†

Should your display suffer from any kind of hardware failure during the warranty period we will send you an advanced replacement and arrange for your old display to be collected, free of charge. This ensures no downtime where you are without a screen.



## Custom Product Testing & Configuration

If you need us to test third party software or a website, or configure your screen in a particular way before it is dispatched (e.g. in a particular orientation or network mode), we can do so to make your life easier.



## 3D Rendering

Want to know how a particular screen will look once installed? Send us a photo of the location and we will create a 3D rendering of any screen in situ to help you to visualise how amazing it will look.



## Logistics Support

We hold more stock in our UK warehouse than any other manufacturer so we can help you meet tight deadlines. For last minute orders we can also offer special express or morning delivery options\*. We also carry out UK based quality control checks on every display before it leaves our warehouse.



## Project Support

If you need to loan a sample unit to test we'd be more than happy to arrange this. We can also provide a rental service for temporary projects\*.



## Customisation\*

Your display can be customised to suit your requirements by adding your logo or printed graphics or even tailoring the colour of a display. We can also carry out hardware modifications to existing products or manufacture bespoke solutions for special projects.



## Extras\*

As well as being able to provide accessories and add-ons, such as extra remote controls, NUC PCs and video wall controllers, we can also supply custom made flight cases which are great if a display needs to be moved safely from place to place.

†UK mainland only

\*These particular services may incur additional charges